

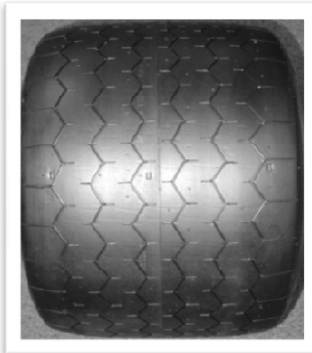
# Tread Patterns that Roger Kraus Racing uses.

All of these tires up to the sheet showing Avon's tread patterns  
have been hand cut at Roger Kraus Racing

Page 1



**Pattern  
Historic Old**



**Pattern  
Historic New**



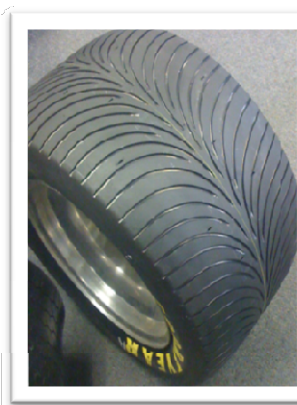
**Pattern  
Historic Wet**



**Pattern  
Dry Intermediate**



**Pattern  
Intermediate**



**Pattern  
Wet Goodyear**



**Hot Rod Pattern  
Drag Slicks Hand Cut**



**Wet Pattern  
Hoosier's Hand Cut**



**Avon Wet Pattern  
Avon's Hand Cut**



**Pattern  
Avon Intermediate**



**Pattern  
Avon Full Wet**



**Pattern  
Straight Cut Grooves**

**Below are the Avon Tread Patterns from Avon.**



**Note: In a few cases Avon uses different names for tread patterns than we do.**